

# LINDINSPECT – Web interface

## Introduction LINDINSPECT

LINDINSPECT is a web tool and user interface for LINDINTELL. LINDINTELL is Lindinvent's server-based system solution for demand-controlled climate control and protective ventilation. LINDINTELL is described in a separate product description.

LINDINSPECT enables clear and straightforward monitoring, administration and analysis of the climate situation in a specific building. Recorded or calculated values relating to system operation are logged and can therefore be presented in the form of various graphs.

For example, LINDINSPECT enables:

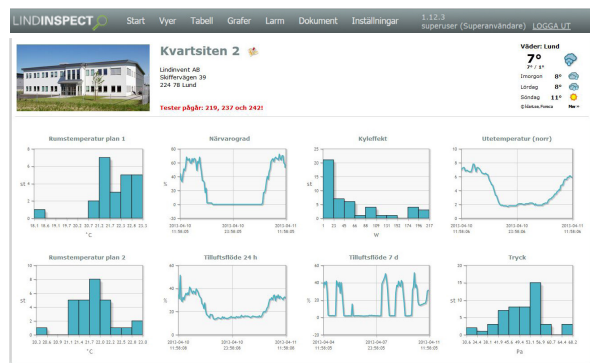
- the operating situation in technical systems to be available for monitoring and control from a user-friendly web interface.
- units in connected networks to be presented both in table form and graphically via views that show the room layout.
- reference values to be read and changed in tables or in pop-up windows from the room layout.
- trends from logged values to be presented in graphs or diagrams for analysis and follow-up.

## Function

Via LINDINSPECT, authorised users have access to a wide range of key data and functions. Here is a selection.

- Alarm management
- Show values (air flow, duct pressure, occupancy etc.)
- Show cumulative values
- Change parameters and reference values
- List, sort and filter values
- Show graphs of logged values
- Collect property documentation

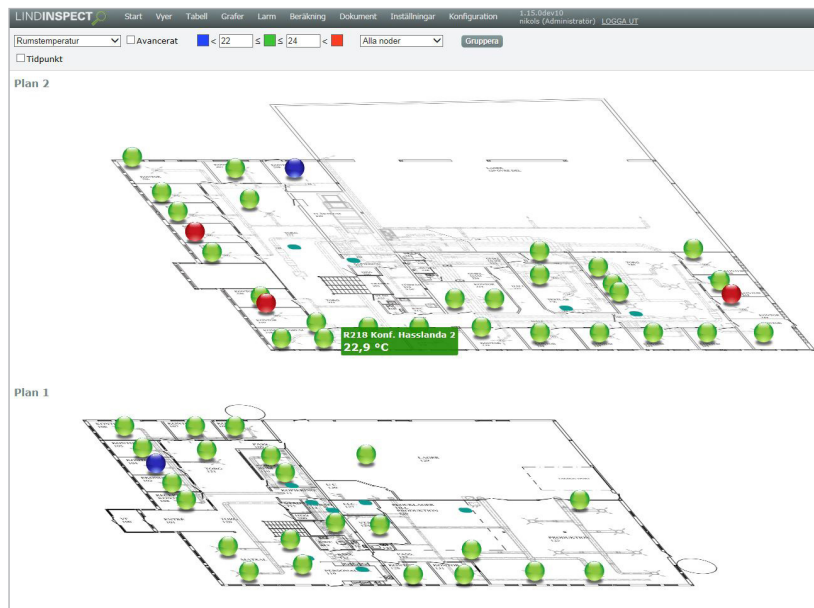
*Example of a presentation view in LINDINSPECT. The current climate situation in the building can be displayed graphically using symbols that dynamically represent measures and interpreted values.*



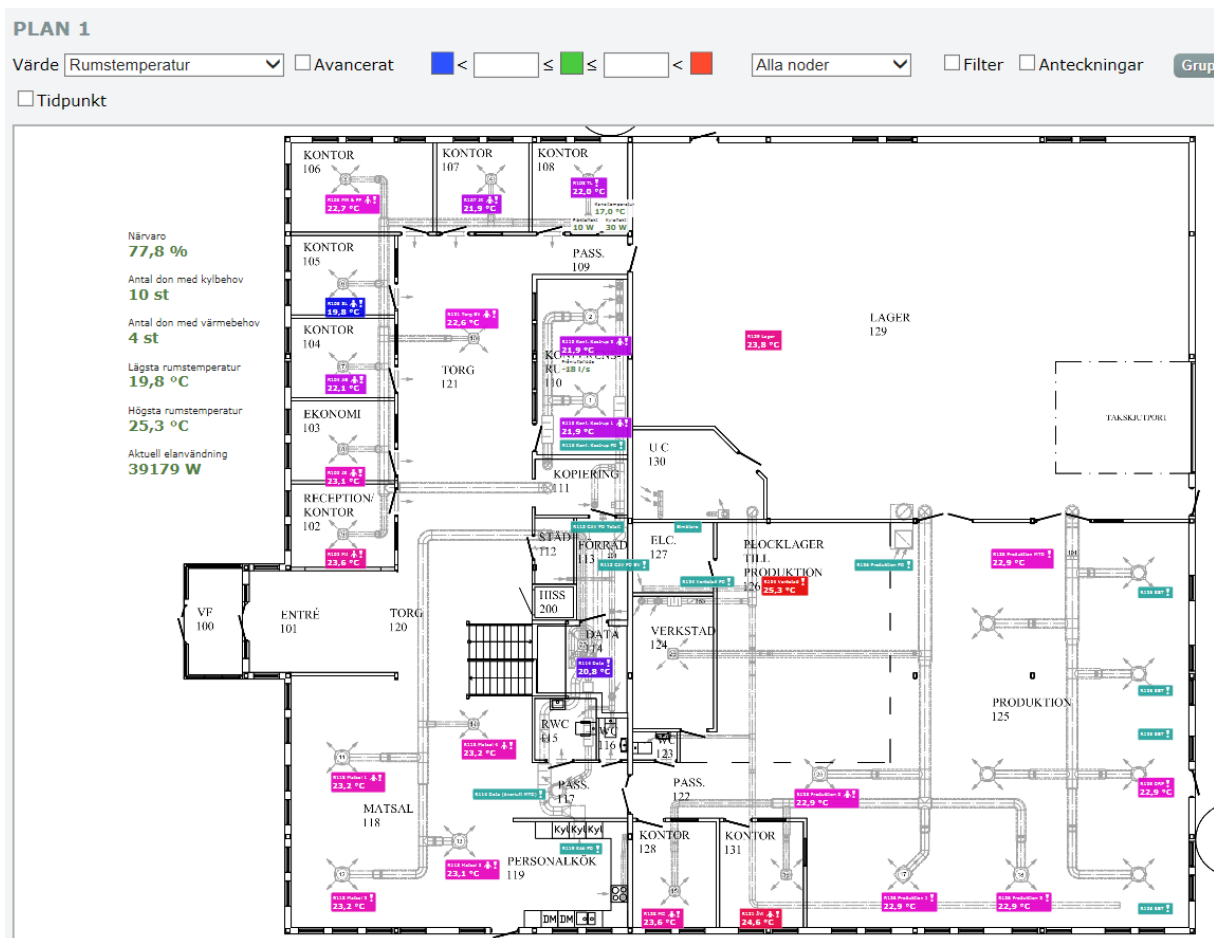
*Example of an instrument panel in Lindinvent's web interface LINDINSPECT. Networks with connected nodes can be monitored and administered via the web tool.*

## Requirements for connection

- The user's computer must have access to a server with LINDINSPECT, via the internet or a local network.
- LINDINSPECT supports: Internet Explorer 9 or later versions or corresponding browsers such as Firefox and Google Chrome.



# LINDINSPECT – Web interface



Example of a floor layout view in LINDINSPECT. Active devices and other nodes in the network are marked and named to enable easy access and an overview of the current operating situation.

## Additional product documentation LINDINSPECT

Table 1: Additional product documentation for LINDINSPECT can be obtained via links on the product's website under Products at [www.lindinvent.se](http://www.lindinvent.se).

Document	Available	Not available	Comments
Installation Instruction		●	Project specific
Start-up instruction		●	Project specific
Maintenance instruction		●	Not relevant; possible information in connection with new versions.
External connection diagram		●	Not applicable
Environmental product declaration		●	Not applicable
User information	●		Brief presentation of some views and menu selections
Modbus list		●	
AMA text		●	None