

XPIR – External occupancy detector [5 VDC]

Introduction XPIR

The external occupancy sensor XPIR detects movements in a defined detection area. A signal is detected by the connected controller or a connected lighting control unit.

- It can be used to control the rate of air flow depending on presence or non-presence in the vented area.
- It can be used to initiate switching-on of the light when presence is determined and to initiate switching-off the light when non-presence is detected in lighting zone.
- It can be configured to room climate controller RCX or Lab climate controller LCX as an alternative to the external occupancy detector PD2400.
- It can, like occupancy detector PD2400, be connected to lighting system control unit SBR and DALI-lighting controller SBD.

Function

The occupancy detector detects changes in infrared radiation caused by the movement of persons (or objects) that differ in temperature from their surroundings. The sensor can detect movements of about 20 cm. See page 2 for information about coverage.

Installation

The sensor is fitted in the ceiling. Several sensors can be connected in parallel to cover a larger area. When used with an active supply air diffuser, the sensor is connected via connection box CBX.



External occupancy sensor XPIR.

Technical specifications

General

Dimension

Length: 71 mm
Diameter: 15 mm

Material

Casing of aluminium

Cables

The sensor is supplied with a mounted, halogen-free signal cable (8 metres)

Colour

White/aluminium

IP class

IP54 encapsulation

Service life

20 years

Electrical system

Supply voltage

5 VDC

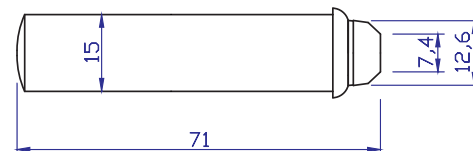
Output

0.003 W

Input and output signals

Output signals

1 x digital 0 or 5 VDC (Occupancy)

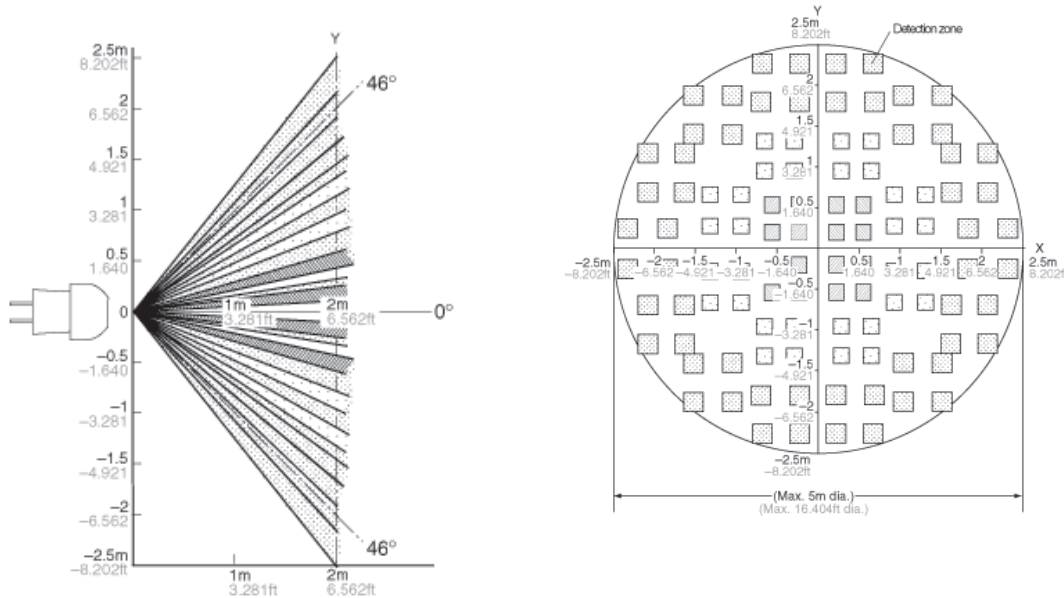


Size of XPIR in mm.

XPIR – External occupancy detector [5 VDC]

Coverage angles

The illustrations below show coverage angles and coverage area at a distance of 2 m from the detector. Note that the detector also detects at distances greater than 2 metres.



Coverage angles and detection range for XPIR in mm.

Additional product documentation

Table 1: Additional documentation for XPIR can be obtained under Products at www.lindinvent.se

Document	Available	Not available	Comments
Installation Instruction	●		Mounting in ceiling tile
Start-up instruction		●	Not applicable
Maintenance instruction		●	Regarded as maintenance-free
External connection diagram	●		
Environmental product declaration	●		Assessed by Byggarbeteinspektionen and Sundahus
User information		●	Not applicable
Modbus list		●	Not applicable
AMA text		●	

Product documentation can be downloaded via www.lindinvent.se/produkter/



Contact

www.lindinvent.se
Tel: 046-15 85 50

Lindinvent – Smarter indoor climate. Greener buildings.

The company offers products and systems for controlling ventilation, lighting, solar shading and local utilization. Equipment and climate solutions are being developed for offices, schools, hospitals, laboratories and similar working environments. Lindinvent's systems work together to provide high indoor comfort and the lowest possible energy use.