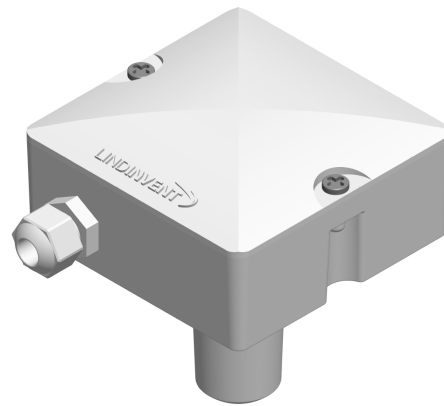


INTRODUCTION

GTQ-D is a combined temperature- and CO₂ sensor designed for duct mounting. Both sensors are mounted in a housing with an insertion tube.

- Intended for use with room climate controller RCX, lab climate controller LCX or an active supply air diffuser.
- Primarily intended for controlling CO₂ levels, with room temperature measurement as optional addition .
- The active supply air diffusers TTC, ISQ and VTD are already equipped with temperature sensors

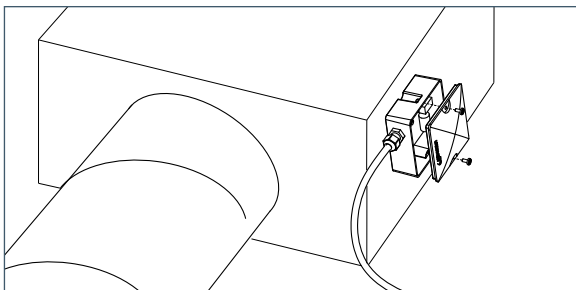


FUNCTION

The temperature sensor provides a 0-10 V output signal (12 – 43° C range) The CO₂ sensor provides a 2-10 V output signal to the connected controller (400-2000 ppm range).

PLACEMENT

For a correct representation of the room temperature the sensor must be placed as close to the exhaust air devices as possible. A location near the exhaust air devices is special significant when air is stationary in the duct in connection with downtime.



GT-D mounted on the exhaust air diffuser.

TECHNICAL SPECIFICATIONS

General

Temperature measurement: The sensor with thermistor of the type NTC is connected to electronics that give an output signal 0-10V.

Carbon dioxide measurement:
Measuring range: 400-2000 ppm

Accuracy: Temperature: ± 0.5 K
Carbon dioxide content: ± (70 ppm + 3%) with background calibration against 400 ppm

Dimension: L110xW90xH100 mm
Length (L) with screw connection and height (H) with plug-in pipe

Material: Enclosure in ABS

Weight: 0,1 kg

Color: Polar white

Electrical system

Supply: 24 VAC

Power consumption: <1 VA

CE marking: Complies with EMC and the low voltage directive.

IP class: The enclosure holds IP31.

Output signals: 1 pc 0-10 V for the range 12-43°C linear.
1 pc 2-10 V for the range ppm 400-2000 linear.

ADDITIONAL PRODUCT DOCUMENTATION GTQ-D

The documents can be downloaded on the product page for GTQ-D at www.lindinvent.se

Document	Comments
Installation instruction	Instructions with commissioning. Hole drilling in duct / plenum box, connection and commissioning instructions with control unit.
Commissioning instructions	For parameter settings on controllers see the Installation Instructions.
Maintenance instructions	Considered maintenance free.
Connection diagram	Displays connections and connection on circuit boards.
Environmental product declaration	Assessed by Bygghälsöbete and Sundahus.