

YOUR WORKPLACE HAS SMART CLIMATE CONTROL

Do you sometimes think about the indoor climate? Or not? This may be because the building is equipped with a Lindinvent system for smart indoor climate in workplaces.

The system solution ensures a good climate while reducing the building's energy use. Your workplace is optimized, every minute, according to the need for fresh air, heating, or cooling. Light control and sun protection can be part of the installed climate control system.

People, solar radiation, lighting, and other heat-generating equipment are loads that your climate control system is designed to handle. Your system cools the premises primarily via under-temperature supply air. The mixing of air takes place above the occupied zone, which means that the entire floor area can be furnished. The amount of supply air is gradually increased at the rate required to maintain the desired room temperature.

Presence control via sensors and zoning adapts air volumes, heating, and lighting.

Carbon dioxide content control can be used to temporarily increase the amount of air to ensure good air quality.

What characterizes the way of control:

- Brings enhanced comfort
 - Silence through uniquely low noise levels gives you peace of mind.
 - Freedom from drafts through supply air from diffusers that are designed to prevent cold air from falling and thus create drafts.
- Provides air and heat when and where it is needed
 - Airflows are balanced and controlled as needed.
 - Additional heating or cooling is controlled so that the system does not cool and heat at the same time.
- High availability for adaptation and maintenance
 - Network connection for access and troubleshooting.
 - Enables integration of complementary systems such as solar shading and more advanced lighting control.
- Reduced energy usage
 - Only necessary air volumes are heated or cooled.
 - All available cooling power from the supply air is used as "free cooling".
 - At recorded absence, the climate control is set to economy mode and lighting is adjusted.
 - Energy, stored in the building frame, is reused in a controlled way.

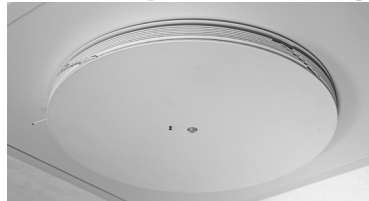
SUPPLY AIR DIFFUSERS IN A LINDINVENT-SYSTEM

ISQ - suspended ceilings



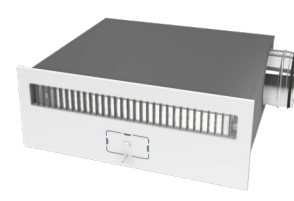
The diffuser has technical solutions for draft-free supply air. It is available with or without control electronics.

TTC - suspended ceilings



The diffuser has technical solutions for draft-free supply air. Versions are available without control electronics.

Wall mounted diffuser



ISQ-V is the wall-mounted version of ISQ. The diffuser has technical solutions that reduce the risk of cold drafts but it has limitations vs. a ceiling-mounted diffuser. The ability to mix room air with supply air is reduced. Furnishing may need to take into account the diffuser placement. ISQ-V is equipped with electronics.

ISQ - visible



The diffuser has technical solutions for draft-free supply air. It is available with or without control electronics.

TTC - visible



The diffuser has technical solutions for draft-free supply air. Versions are available without control electronics.