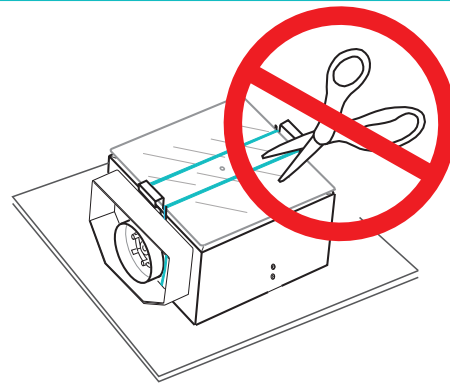


Installation Instructions

BEFORE INSTALLATION

- The diffuser is delivered on pallet and it contains of both the plenum box and the diffuser part.
- Do not remove the handles and the protective cardboard!
- The protective cardboard is removed after final cleaning.

Note: Mounting without handles is performed with the diffuser plate dismantled, see disassembly.



ANCHORE ALTERNATIVES

Both ISQ-F and ISQ-FM are prepared for attachment to the ceiling via suspension arms or via a threaded rod. The suspension arms are included on delivery.

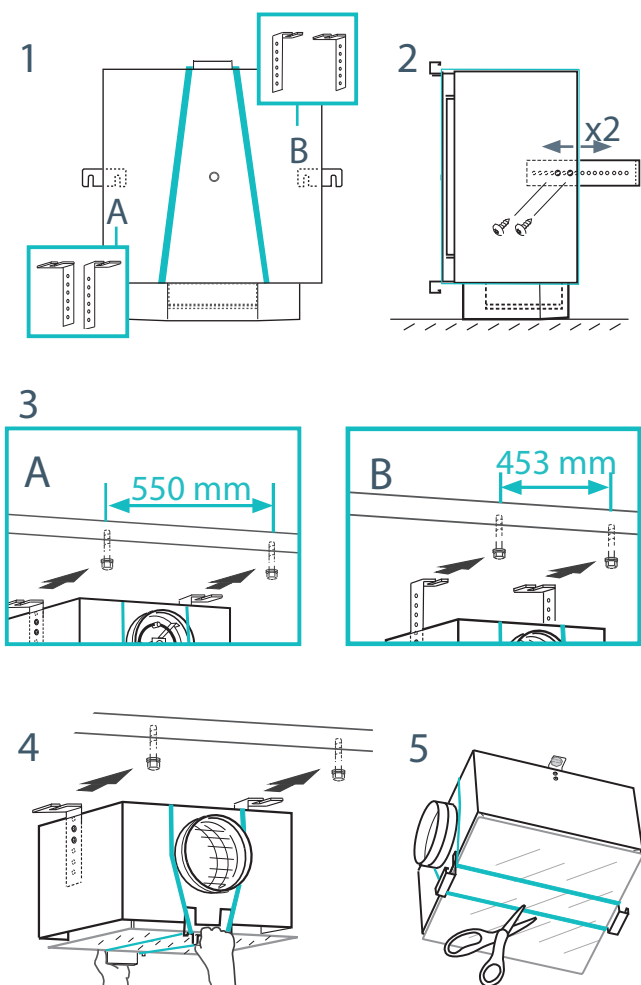
Suspension arms and ankerbolt:

- 1 Place the unit standing on the duct connection with its protection. Select the suspension arm direction A or B.
- 2 The supplied suspension arms are positioned with the intended suspension length and attached to the plenum box using metal screws.
- 3 Fasten the ankerbolts in the ceiling according to selected suspension arm direction A or B.
- 4 Lift the unit and hook up the suspension arms. Tighten the ankerbolts so that the device with suspension arms is firmly seated in the roof structure.
- 5 Leave protection material, packing bands and handles mounted until commissioning.

Threaded rod and Z Bracket:

The diffuser plenum box is equipped with a closed rivet nut centrally located on the upper side of the unit. The internally threaded rivet nut (M8) is intended for hanging the device via a threaded rod attached to a Z bracket in the ceiling. The rod is secured to the Z bracket via a nut and a counter nut.

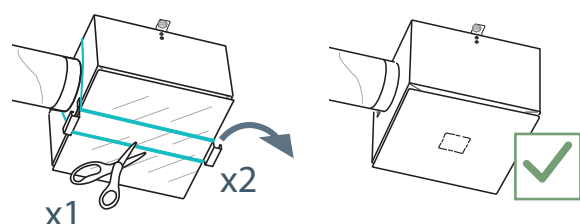
After completion of assembly: follow the check-list for approved installation on the next page.



AT FINAL CLEANING

- Cut the packing band and remove the handles.
- Remove the protective cardboard.

ISQ-F: The diffuser is connected to CAN and 24 VAC via connection box CBD.



Disassembly

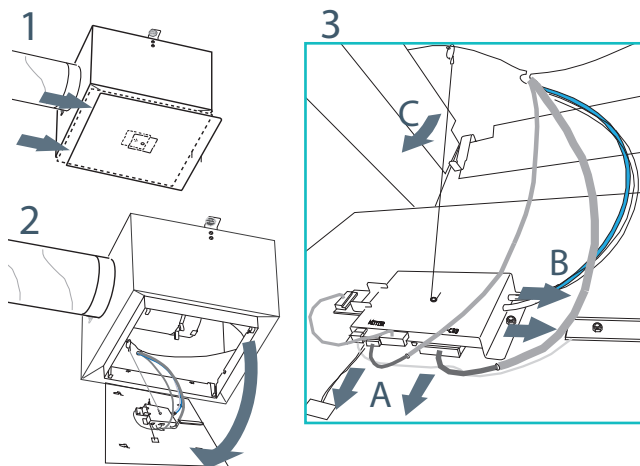
BEFORE DISASSEMBLY

Wait to loosen the duct and the bolts that secure the unit to the ceiling until the diffuser plate has been removed, see below. Plan for how the disassembled parts are to be handled and stored.

DISMOUNT THE DIFFUSER PLATE

- 1-2 Loosen and angle down the diffuser plate by first sliding the plate in the direction of the duct connection until the plate is released from four fasteners. In this position, the plate is still attached to the junction box by a detachable suspension device.
- 3 ISQ-F: Disconnect cables (A) and hoses (B). ISQ-F & ISQ-FM: Loosen the suspension (C) and lower the diffuser plate safely to the floor.

ISQ-F: Notice where wiring and hoses are to be reconnected. The wiring for 24 VAC + CAN to connection box CBD may need to be disconnected.

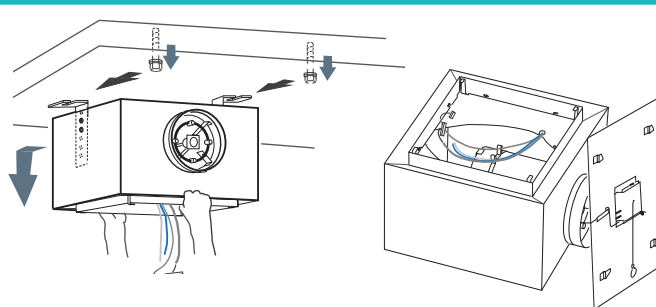


BRING DOWN THE DIFFUSER

Note: The diffuser is ment to be lifted down with the diffuser plate removed.

Suspension arms: Loosen the two bolts in the ceiling just enough so the unit easily can be hooked off and on again.

Threaded rod: Dismantle the rod from the Z bracket.



Reassembly

Note: The unit is lifted up to the ceiling with the diffuser plate detached.

Lift up and position the unit. Tighten bolts or other fasteners so that the unit is firmly seated against the ceiling. Follow the disassembly instructions above in reverse order.

After completion of assembly:
Follow the checklist for approved installation.

Checklist

- ☐ ISQ-FM/ISQ-F is securely anchored in the ceiling.
- ☐ If the diffuser plate was dismantled: Ensure that the plate is securely attached by both the device for suspension and by means of all four mounting arms.
- ☐ There are no additional fasteners within the red-marked area as shown in the illustrations here by.
- ☐ The unit is left with its protective cardboard in place until final cleaning is carried out.

