

Product description

HTK160/250 – Plenum box [concealed mounting; active diffuser]

Introduction HTK160/250

HTK is a plenum box for supply air diffuser TTC-250.

- It is used for concealed mounting above the dropped (suspended) ceiling system.
- Sound damping.
- Duct connection 160.
- It is fitted with brackets for bayonet fitting of the diffuser.
- Equipped with a hole where the cable from the fitted active supply air diffuser is to be anchored.
- Equipped with two mounting screws for Mounting Plate CBX. CBX, which can be attached to the mounting plate, is the junction box used for each active diffuser to connect additional equipment and to connect the controller unit in the diffuser to the communication loop.

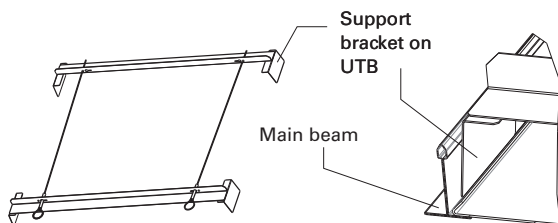
Function

The plenum box is used for mounting and securing Lindinvent's active ceiling supply air diffuser TTC-250 in a dropped ceiling.

Mounting rail UTB-250 (Accessory)

The mounting rail UTB is used and normally comes with the plenum box on delivery as a mounting accessory. The thickness of the ceiling plate(tile) must not exceed 40 mm and the profile should be one of the most common profiles on the market. In other cases, the plenum box is mounted without mounting rail. When ordering, type of ceiling plate (edge A / D / E etc.) is specified together with the distance from the bottom of the main beam to the lower ceiling plate.

Note: The thickness of the ceiling tile must not exceed 40 mm.



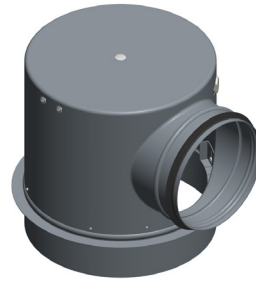
Mounting rail UTB with the support bracket correctly positioned on the inside of the dropped ceiling main beam. If cover plate UTD is used, the support bracket must be placed between the inside of the main beam profile and the outer edge of cover plate UTD.

Cover plate UTD-250 B (Option)

Suspended cover plate UTD-250 B can be ordered as an option. The plate is designed for mounting in a dropped (suspended) ceiling system with tile profile edge A, 600 x 600 mm.



Ceiling plate UTD-250 B is used with ceiling tile profile edge A.



HTK-160/250 – Plenum box for concealed mounting of the active supply air diffuser TTC-250.

Technical specifications

Dimensions (mm)

See illustrations below.

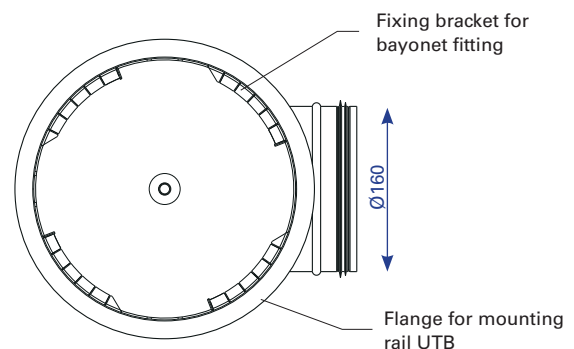
Material

Galvanised steel plate.

Insulation: Thermally bound polyester fibre.

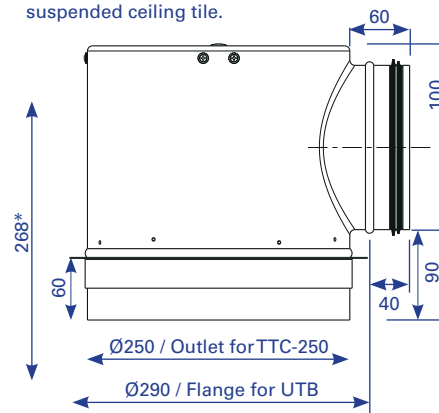
Weight

HTK-160/250: 1.9 kg.



HTK-160/250: View from below.

Note: Height measurement from the bottom edge of the suspended ceiling tile.*



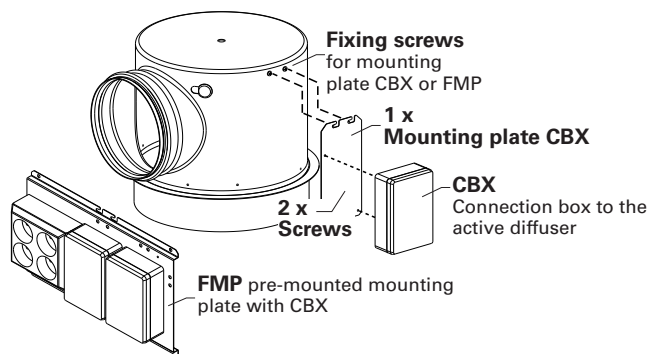
HTK-160/250: External dimensions in mm.

Product description

HTK160/250 – Plenum box [concealed mounting; active diffuser]

Mounting plate CBX and FMP (Accessory/option)

Mounting plate CBX is delivered with the plenum box as standard, while mounting plate FMP is an option; see the product description for FMP.



Mounting plate CBX is supplied with the plenum box. FMP can be ordered as an accessory to HTK with pre-mounted units. The mounting plate is fixed to the plenum box using the fixing screws that are already fitted on delivery.

Additional product documentation HTK

Table 1: Additional documentation for HTK can be obtained via links on the product's website under Products at www.lindinvent.se

| Document | Available | Not available | Comments |
|-----------------------------------|-----------|---------------|--|
| Installation Instruction | ● | | Combined instruction with the installation instruction for TTC |
| Start-up instruction | | ● | Not applicable |
| Maintenance instruction | | ● | Regarded as maintenance-free |
| External connection diagram | | ● | Not applicable |
| Environmental product declaration | ● | | Assessed by Bygghälsöversynen and Sundahus |
| User information | | ● | Not applicable |
| Modbus list | | ● | Not applicable |
| AMA text | | ● | See AMA text for supply air diffuser TTC |

Product documentation can be downloaded via
www.lindinvent.se/produkter/



Contact

www.lindinvent.se
Tel: 046-15 85 50

Lindinvent – Smarter indoor climate. Greener buildings.

The company offers products and systems for controlling ventilation, lighting, solar shading and local utilization. Equipment and climate solutions are being developed for offices, schools, hospitals, laboratories and similar working environments. Lindinvent's systems work together to provide high indoor comfort and the lowest possible energy use.

Product description

HTK250/400 – Plenum box [concealed mounting; active diffuser]

Introduction HTK250/400

HTK is a plenum box for supply air diffuser TTC-400.

- It is used for concealed mounting above the suspended ceiling system.
- Sound damping.
- Duct connection 250.
- It is fitted with fixing brackets for bayonet fitting of the diffuser.
- Has a hole to withdraw and anchor the cable from the supply air diffuser.

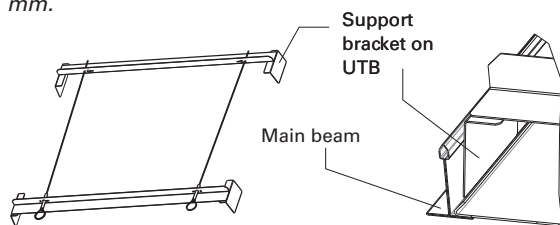
Function

The plenum box is normally used together with mounting rail UTB-400 for mounting Lindinvent's active ceiling supply air diffuser TTC-400.

Mounting rail UTB-400 (Accessory)

Mounting rail UTB, which locks the plenum box in the correct position in relation to the suspended ceiling tile, is delivered with the plenum box as standard. It is used for the most common ceiling tile profiles. However the thickness of the ceiling tile must not exceed 40 mm. Otherwise the plenum box is mounted without a mounting rail. When ordering, please state the type of ceiling tile profile (edge A/D/E etc.) and the distance from the lower edge of the main beam in the suspended ceiling to the lower edge of the ceiling tile.

Note: The thickness of the ceiling tile must not exceed 40 mm.



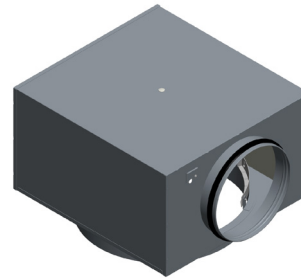
Mounting rail UTB with correct positioning of the support bracket on the suspended ceiling main beam.

Suspended ceiling plate UTD-400 (Option)

Suspended ceiling plate UTD-400 can be ordered as an option. The plate is designed for mounting in a suspended ceiling system with tile profile edge A, 600 x 600 mm.



Ceiling plate UTD-400 is used with ceiling tile profile edge A.



HTK-250/400 – Plenum box for concealed mounting of the supply air diffuser TTC-400.

Technical specifications

Dimensions (mm)

See illustrations below.

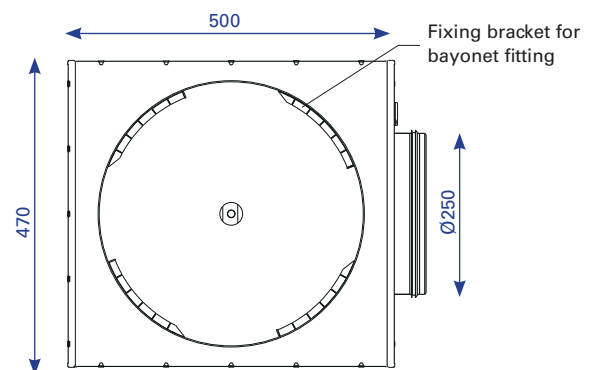
Material

Galvanised steel plate.

Insulation: Thermally bound polyester fibre.

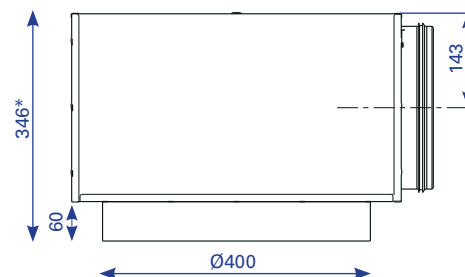
Weight

HTK-250/400: 6.8 kg.



HTK-250/400: View from below.

Note: Height measurement from the bottom edge of the suspended ceiling tile.*



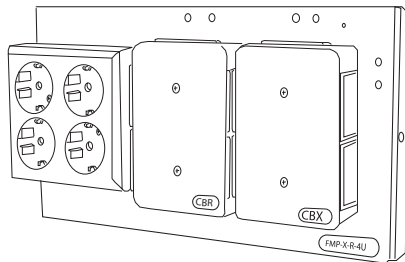
HTK-250/400: External size in mm.

Product description

HTK250/400 – Plenum box [concealed mounting; active diffuser]

Mounting plate FMP (Option)

FMP is a mounting plate with connection box CBX pre-mounted. The plate can also be ordered with lighting system control box CBR and a pre-mounted branch connection for lighting; see product description for FMP.



Mounting plate FMP can be ordered as an accessory to HTK. The mounting plate is fixed onto the plenum box.

Additional product documentation HTK

Table 1: Additional documentation for HTK can be obtained via links on the product's website under Products at www.lindinvent.se

| Document | Available | Not available | Comments |
|-----------------------------------|-----------|---------------|--|
| Installation Instruction | ● | | Combined installation instruction with diffuser installation TTC |
| Start-up instruction | | ● | Not applicable |
| Maintenance instruction | | ● | Regarded as maintenance-free |
| External connection diagram | | ● | Not applicable |
| Environmental product declaration | ● | | Assessed by Byggsvarubedömningen and Sundahus |
| User information | | ● | Not applicable |
| Modbus list | | ● | Not applicable |
| AMA text | | ● | See AMA text for supply air diffuser TTC |

Product documentation can be downloaded via
www.lindinvent.se/produkter/



Contact

www.lindinvent.se
Tel: 046-15 85 50

Lindinvent – Smarter indoor climate. Greener buildings.

The company offers products and systems for controlling ventilation, lighting, solar shading and local utilization. Equipment and climate solutions are being developed for offices, schools, hospitals, laboratories and similar working environments. Lindinvent's systems work together to provide high indoor comfort and the lowest possible energy use.