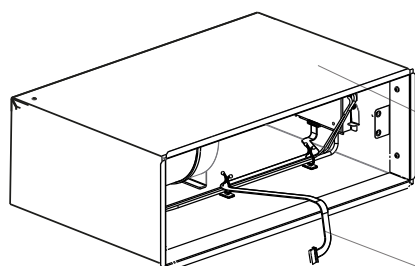


DELIVERY UNIT PRESENTATION

The components are presented below. All parts are normally packed together on a pallet.

Plenum box with connection box CBD

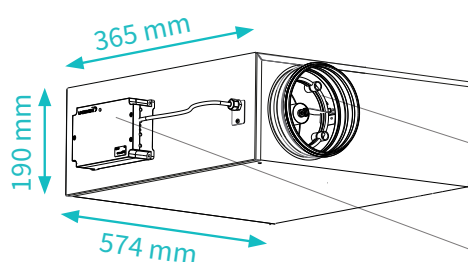


Plenum box

The plenum box contains control electronics, an air flow damper and an airflow measuring device.

Cable to the front panel

The front panel (see below) is mounted on-site, after the plenum box is positioned in the wall.



Airflow measuring device

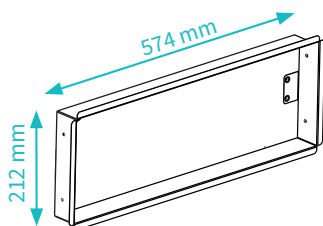
An airflow measuring device is mounted in the inlet to the airflow damper.

Connection box CBD

CBD is connected upon delivery (cable length as ordered). The encapsulation is equipped with magnets for easy and flexible positioning onto to the plenum box.

The front and back side of the plenum box.

Mounting frame

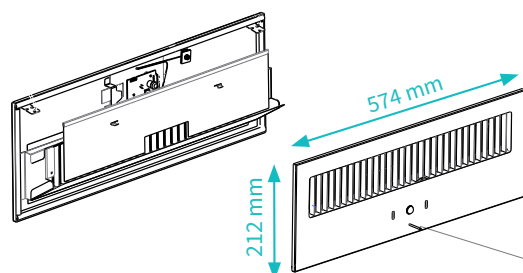


Monting frame

The frame functions as a wall bracket, and a holder for the front panel.

The mounting frame.

Front panel



Detachable front panel

Powder-coated unit with a grill for an adjustable horizontal air distribution pattern and sensor openings. Sensors and the holder for an expansion card are located on the back side of the unit.

Room temperature sensor

The sensor is located centrally on the lower part of the spreader part front panel, just below the presence sensor.

The back side and the front side of the panel.

Installation Instructions (Step 1 to 8)



Please notice (ahead of installation)

- ☐ Before unpacking the unit, please check the duct connection side. [LR stands for left- or right-side duct connection. B stands for back-side duct connection.] See the packaging labelling.



- ☐ Check that the delivery unit is complete:
 - The plenum box with connection box CBD
 - The mounting frame
 - The front panel
- ☐ Materials not included in delivery:
 - Sealing material
 - 4 x screws for wall mounting

Plenum box installation:

1. Wall opening

Create an opening through the wall.

Inner dimensions:

Approximately 560 (W) x 200 (H) mm.

Minimum distance to the ceiling: > 25 mm.

2. Placement

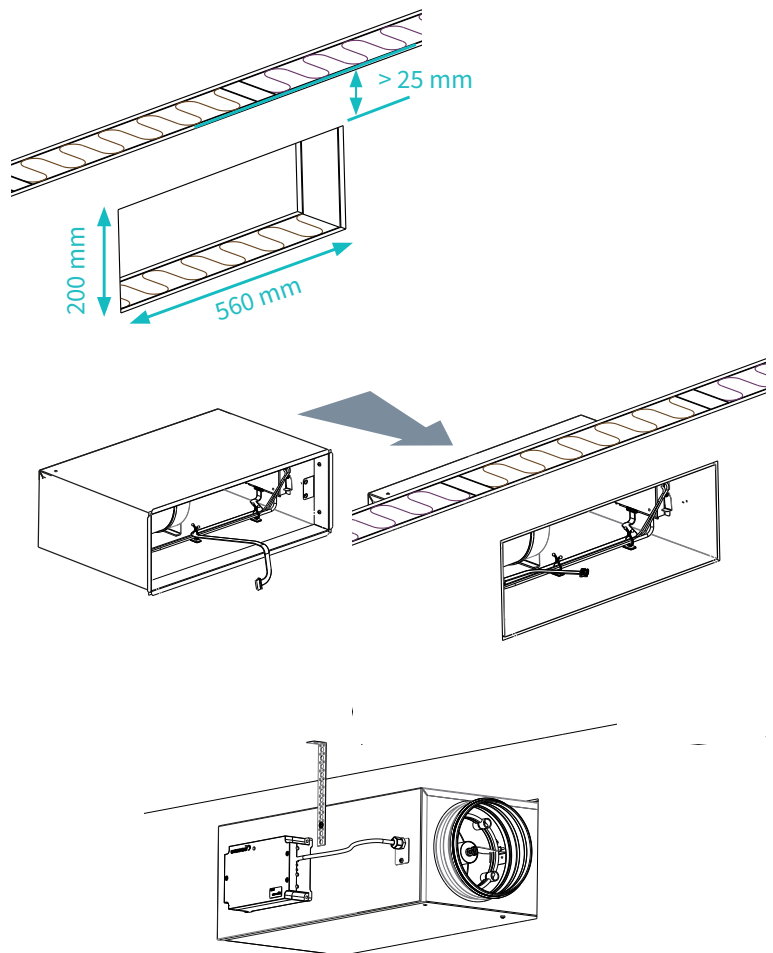
The plenum box is inserted from outside the room so that its front opening is just level with the inner wall.

3. Relieve and seal

Relieve against the joists at the rear edge.
Seal-off between the wall and the diffuser.

4. Placement of connection box CBD

CBD is placed on the plenum box using the casing's magnets or in another location using screws.

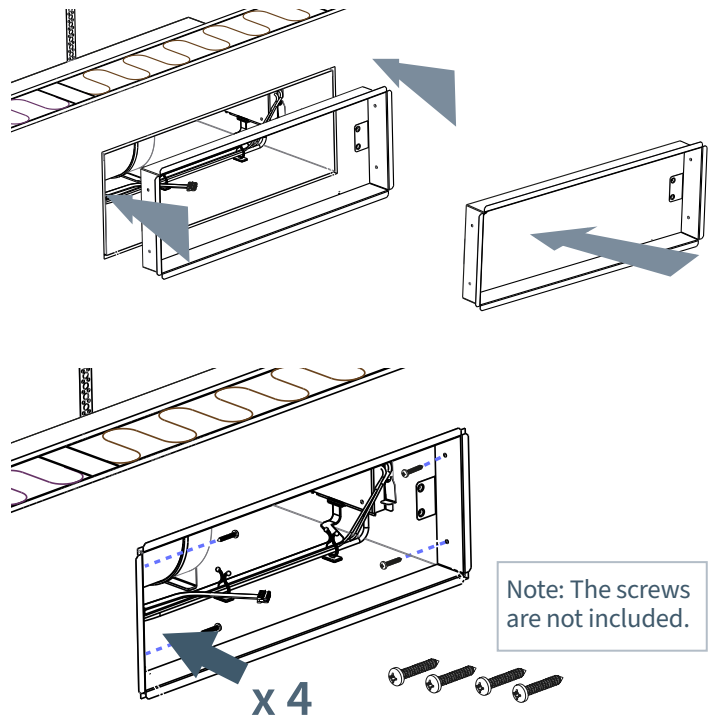


Installation Instructions

Mounting frame installation

5. Insert and fasten the frame

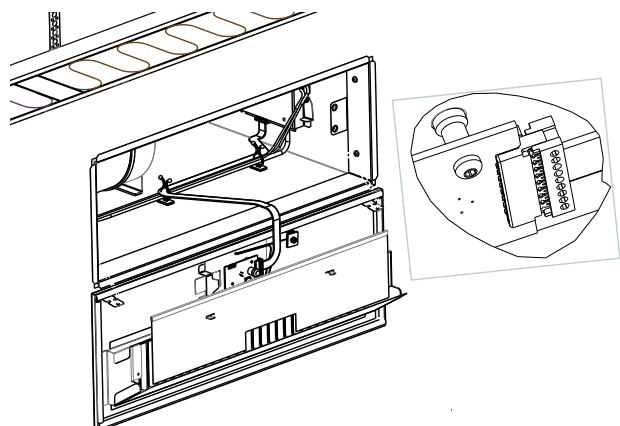
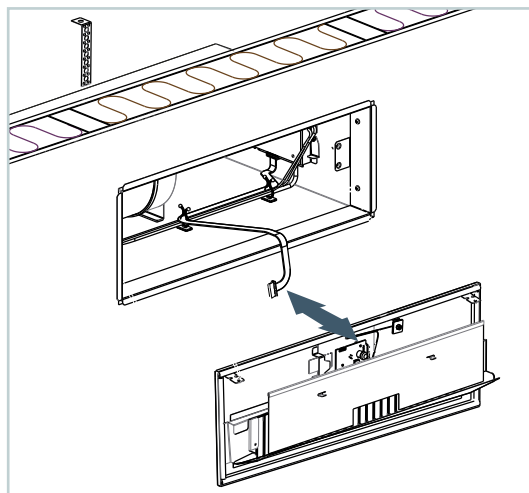
Insert the mounting frame into the plenum box opening. The frame is screwed from the inside into the wall together with the plenum box via four pre-drilled holes.



Front panel installation

6. Connection

While the bottom edge of the front panel is held at an angle from the wall, so as not to risk damaging the room temperature sensor, connect the cable from the control electronics in the plenum box to the circuit board on the front panel.

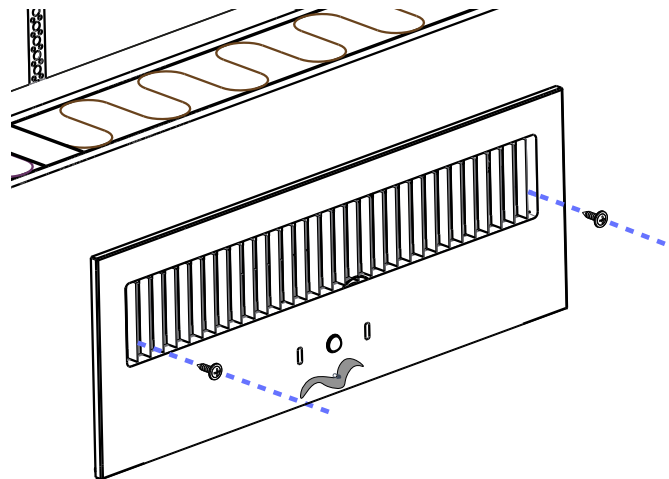
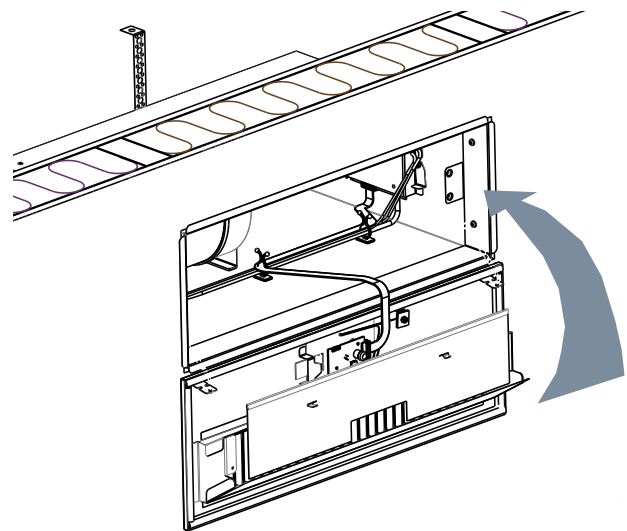


Installation Instructions

7. Attach the front panel

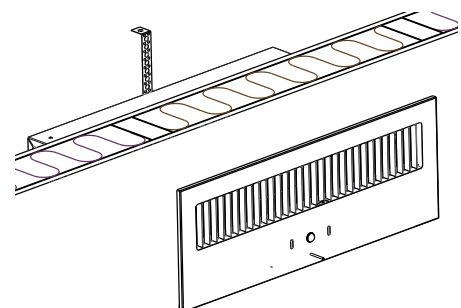
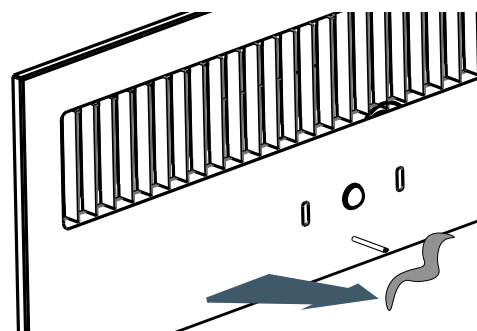
After the cable has been connected, turn the front panel up and place it over the mounting frame.

Attach the panel with the two pre-assembled screws located inside the grille.



8. Position the temperature sensor

Remove the protective tape from the sensor and pull it out to its end position. It should protrude straight into the room for correct measurement.



After connecting the supply air duct and CAN + 24 VAC (via connectionbox CBD), the wall unit is ready for commissioning.